

# Fiber-Optic Pool Cover Form (Gunite)

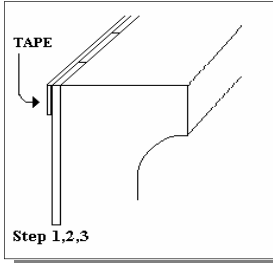
## Cantilever Form Instruction Sheet

**STEGMEIER**  
LLC

www.stegmeier.com

Technical Support (800) 382-5430

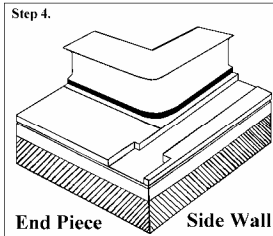
DOWNLOAD THE LATEST STEGMEIER APP, AVAILABLE FOR IOS AND ANDROID



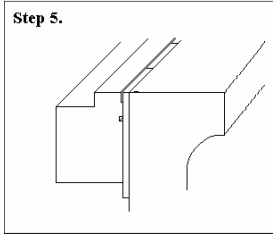
Step 1. Remove any burrs on top of the tile with an abrasive stone, at least 1" back from the tile. This will allow the tile strip to lay flat.

Step 2. Wipe the tile down with a clean cloth to remove any moisture or dust.

Step 3. Run a piece of bending tape along the top of the tile. This tape is for easy removal of the extender after the job is complete. Let one end of the tape hang down into the pool twenty four inches.

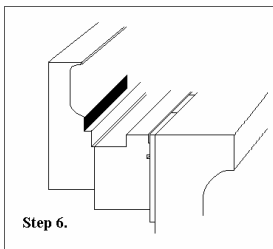


Step 4. Place the preformed corners in the corners opposite the roller. There is a groove cut in the corners. This groove should run parallel with the track side. Peel the brown paper on the double faced tape (one side at a time). Then line up the shelf of the corner with the tile. Press the form to the tile.

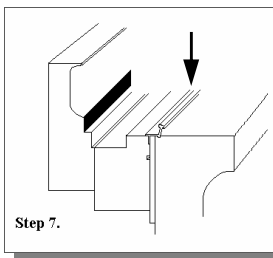


Note : On cold weather days the tile should be warmed up. To do this, heat the tile up (with a heat gun) one foot in front of the form you are about to attach.

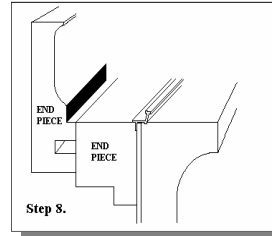
Step 5. With the extender, peel the brown paper on the double-faced tape (one foot at a time). Then line the top of the extender up with the tile (as shown in picture). Press the form to the tile.



Step 6. Peel the brown paper off the face form and line the track groove up with the extender. Press the face form to the extender.

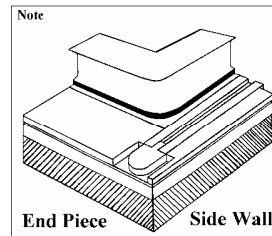


Step 7. Place the tile strip in the form (as shown in picture). The tile strip should lay flat on top of the tile and be butted up snug to the next tile strip. This is important as the tile strip will be showing after the job is complete.



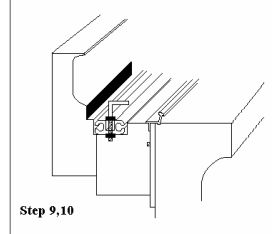
Step 8. This is for the end piece (the side of the pool opposite the roller). All the end pieces will be marked "END PIECE". Place the extender on (it will be upside down). Then the face form and the tile strip.

Note : The small piece of track that attaches to the pulley should have slotted holes. The slotted holes are to let the track slide out if you ever have to replace the pulley or cable. You can ask the manufacture of the track to make these holes.



Step 9. Pre-drill the holes in the cover track (roughly 24 on each side of the pool). Then put a nut on the anchor, slide the anchor into the track, then put on the second nut (leave 1/8" of tread exposed after second nut). Do this for the whole track.

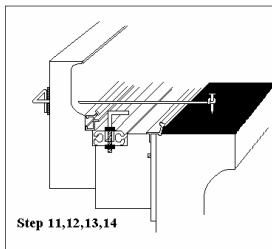
Step 10. Put the track into the groove (as shown in picture). Press the track down hard enough to make anchor bolt impression in foam. Then remove track and cut or burn hole in foam large enough to receive anchor and nuts. Insert the lead ropes and place the track back in the form.



Step 11. With the face form peel the paper off the tape and place the fiber-optic receiver in the slot (as shown in picture).

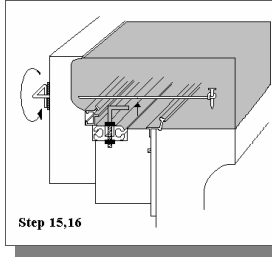
Step 12. Lay a bond breaker down on the bond beam. The bond breaker will separate the concrete from the tile bed, so if the soil shifts, the tile won't be damaged. The bond breaker can be 15. lb felt or paper.

Step 13. Drive the concrete nails into the bond beam 7" apart and 5" from the tile. The nail should be driven into the bond beam only halfway.



Step 14. Push the tie wire (with washer) through the form even with the tile strip. Hold the form with slight pressure and tie the tail of the tie wire around the nail. The tie wire must be on top of the tile strip for support and to hold the tile strip down. Do steps 11 through 14 for end piece also.

Step 15. While pouring, make sure to tap the form to release air bubble. This will prevent honeycombing.



Step 16. Once the concrete is strong enough to support it's own weight, the face forms can be removed. To remove the form, twist the tie wire head, it will break the neck of the tie wire inside the concrete. Then, pull the face form back and down exposing the face for the finish. Leave the extenders for 12 hours. Then pull the bending tape straight down to remove the extender.

Note: Removing the forms one piece at a time will help keep the moisture in the concrete to allow adequate time to finish.